

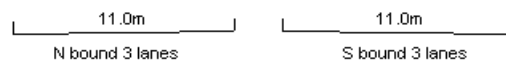
YEAR 2015

CORE STATION 5029

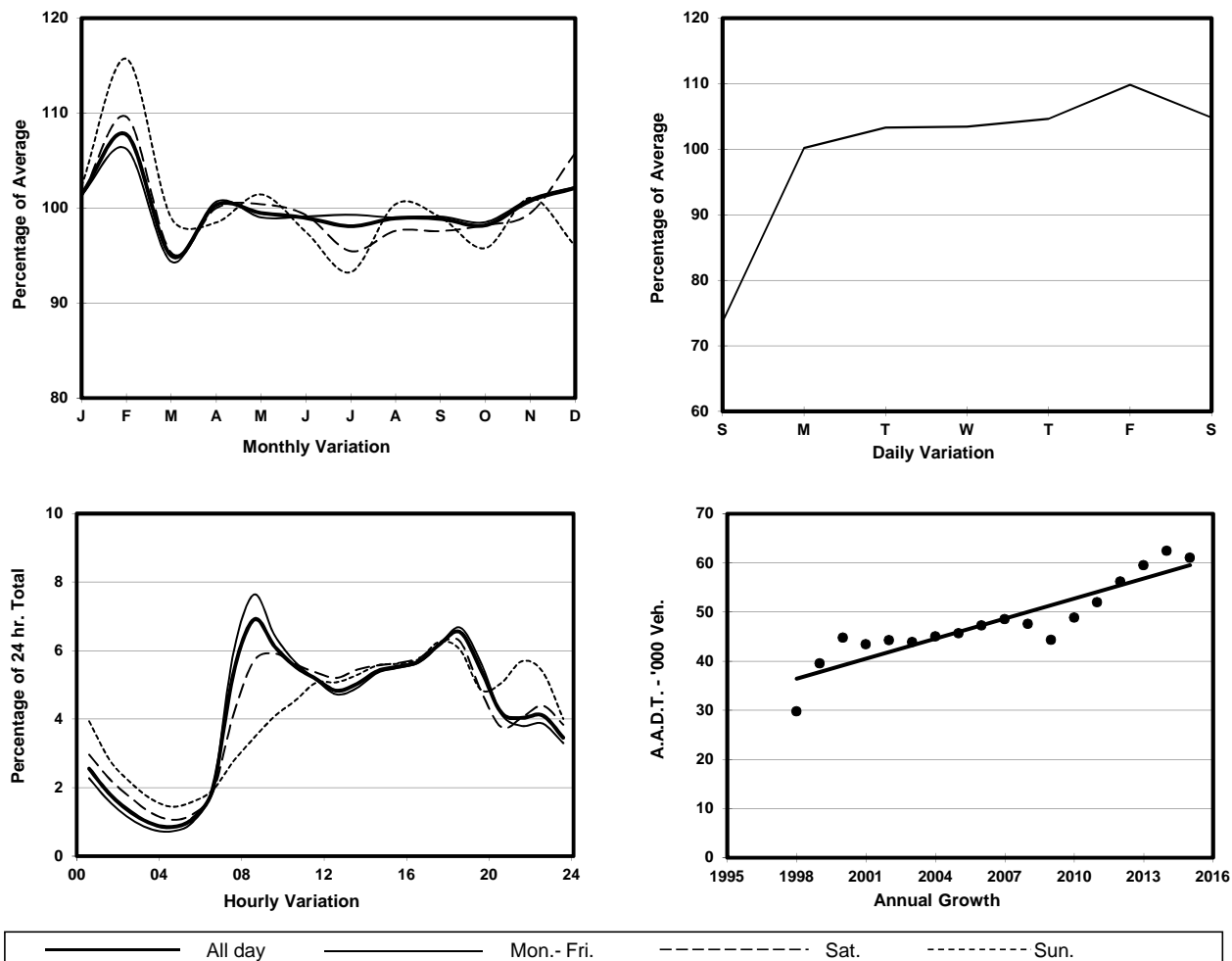
ROAD NETWORK MAJOR

ROAD TYPE EXPRESSWAY

LINK TSING LONG HIGHWAY - TAI LAM TUNNEL (from AU TAU INT to TUEN MUN RD)



1. TRAFFIC FLOW VARIATION AND GROWTH



2. TRAFFIC CHARACTERISTICS (BY DIRECTION)

| Parameter | All - Day | Mon. - Fri. | Sat. | Sun. |
|--------------------------------------|-----------|-------------|-----------|-----------|
| SOUTH BOUND | | | | |
| A.A.D.T. | 30910 | 32770 | 32620 | 22960 |
| R 12 / 24 - % | 71.2 | 72.8 | 69.2 | 62.2 |
| R 16 / 24 - % | 86.8 | 87.9 | 84.8 | 81.6 |
| AM Peak Hour | 0800-0900 | 0800-0900 | 0800-0900 | 0900-1000 |
| One-way flow at AM peak hour | 2570 | 3030 | 2180 | 1030 |
| T - % (AM) | - | 27.5 | - | - |
| PM Peak Hour | 1800-1900 | 1800-1900 | 1700-1800 | 1700-1800 |
| One-way flow at PM peak hour | 1850 | 1960 | 1960 | 1460 |
| T - % (PM) | - | 25.4 | - | - |
| Prop.of commercial vehicles - 16 hr. | - | 31.9 | - | - |
| NORTH BOUND | | | | |
| A.A.D.T. | 30100 | 31750 | 32110 | 22830 |
| R 12 / 24 - % | 65.3 | 66.7 | 64.4 | 56.8 |
| R 16 / 24 - % | 85.3 | 86.7 | 82.8 | 79.3 |
| AM Peak Hour | 0800-0900 | 0800-0900 | 0900-1000 | 0900-1000 |
| One-way flow at AM peak hour | 1650 | 1900 | 1680 | 840 |
| T - % (AM) | - | 32 | - | - |
| PM Peak Hour | 1800-1900 | 1800-1900 | 1800-1900 | 1700-1800 |
| One-way flow at PM peak hour | 2140 | 2340 | 2110 | 1410 |
| T - % (PM) | - | 27 | - | - |
| Prop.of commercial vehicles - 16 hr. | - | 31.5 | - | - |

3. OTHER INFORMATION AND COMMENT

4. Vehicle classification and occupancy - Monday to Friday

| Time | | Class of vehicle | | | | | | | | | |
|------------------------|-----|------------------|---------|------|---------|-----|------------|-------|---------|---------|------|
| | | Motor | Private | Taxi | Private | PLB | Goods veh. | | Non | Fr. Bus | |
| | | Cycle | Car | | LB | | Light | M & H | Fr. Bus | SD | DD |
| 0700-0800 | Pro | 1.8 | 43.4 | 7.5 | 0.3 | 0.0 | 16.3 | 20.9 | 1.9 | 0.0 | 8.0 |
| | Ocp | 1.1 | 1.6 | 1.9 | 6.5 | 0.0 | 1.4 | 1.1 | 38.6 | 0.0 | 73.9 |
| 0800-0900 Peak hour | Pro | 1.3 | 49.4 | 6.6 | 0.3 | 0.0 | 13.5 | 20.0 | 2.3 | 0.0 | 6.7 |
| | Ocp | 1.1 | 1.4 | 2.1 | 2.0 | 0.0 | 1.3 | 1.1 | 33.1 | 0.0 | 70.1 |
| 0900-1000 | Pro | 0.4 | 41.2 | 6.4 | 0.2 | 0.0 | 19.8 | 23.5 | 1.3 | 0.0 | 7.2 |
| | Ocp | 1.0 | 1.5 | 2.1 | 2.5 | 0.0 | 1.5 | 1.2 | 24.0 | 0.0 | 39.7 |
| 1000-1100 | Pro | 0.2 | 38.1 | 5.6 | 0.0 | 0.0 | 18.2 | 30.8 | 1.7 | 0.0 | 5.3 |
| | Ocp | 1.0 | 1.5 | 2.3 | 0.0 | 0.0 | 1.5 | 1.2 | 31.1 | 0.0 | 39.3 |
| 1100-1200 | Pro | 0.6 | 42.8 | 5.8 | 0.0 | 0.0 | 17.6 | 26.0 | 1.4 | 0.0 | 5.9 |
| | Ocp | 1.5 | 1.5 | 2.3 | 0.0 | 0.0 | 1.5 | 1.2 | 29.0 | 0.0 | 36.4 |
| 1200-1300 | Pro | 0.9 | 44.6 | 5.7 | 0.0 | 0.0 | 17.6 | 24.1 | 1.1 | 0.0 | 6.0 |
| | Ocp | 1.0 | 1.7 | 2.2 | 0.0 | 0.0 | 1.5 | 1.3 | 36.9 | 0.0 | 36.4 |
| 1300-1400 | Pro | 0.4 | 35.8 | 6.4 | 0.2 | 0.0 | 17.3 | 33.2 | 1.6 | 0.0 | 5.2 |
| | Ocp | 1.0 | 1.5 | 2.1 | 1.0 | 0.0 | 1.5 | 1.3 | 26.6 | 0.0 | 40.5 |
| 1400-1500 | Pro | 0.4 | 39.1 | 5.3 | 0.1 | 0.0 | 18.5 | 29.6 | 1.4 | 0.0 | 5.6 |
| | Ocp | 1.0 | 1.7 | 2.2 | 2.0 | 0.0 | 1.6 | 1.2 | 26.2 | 0.0 | 36.1 |
| 1500-1600 | Pro | 0.7 | 39.9 | 6.4 | 0.3 | 0.0 | 15.8 | 29.9 | 1.3 | 0.0 | 5.7 |
| | Ocp | 1.0 | 1.6 | 2.2 | 2.0 | 0.0 | 1.5 | 1.2 | 23.4 | 0.0 | 37.9 |
| 1600-1700 | Pro | 1.4 | 37.5 | 6.8 | 0.1 | 0.0 | 18.8 | 28.3 | 1.2 | 0.0 | 5.9 |
| | Ocp | 1.0 | 1.5 | 2.2 | 15.0 | 0.0 | 1.5 | 1.2 | 28.1 | 0.0 | 43.1 |
| 1700-1800 | Pro | 1.9 | 39.6 | 6.9 | 0.1 | 0.0 | 18.4 | 24.8 | 1.8 | 0.0 | 6.5 |
| | Ocp | 1.1 | 1.6 | 2.6 | 1.0 | 0.0 | 1.5 | 1.2 | 31.0 | 0.0 | 52.8 |
| 1800-1900 | Pro | 1.1 | 52.9 | 5.3 | 0.0 | 0.0 | 14.5 | 17.0 | 2.5 | 0.0 | 6.8 |
| | Ocp | 1.0 | 1.6 | 2.0 | 0.0 | 0.0 | 1.6 | 1.1 | 35.6 | 0.0 | 75.4 |
| 1900-2000 | Pro | 1.0 | 52.9 | 7.4 | 0.0 | 0.0 | 10.0 | 18.3 | 2.5 | 0.0 | 8.0 |
| | Ocp | 1.1 | 1.7 | 2.0 | 0.0 | 0.0 | 1.5 | 1.1 | 39.7 | 0.0 | 61.8 |
| 2000-2100 | Pro | 1.1 | 57.0 | 10.0 | 0.0 | 0.0 | 7.2 | 15.2 | 1.6 | 0.0 | 7.8 |
| | Ocp | 1.0 | 1.5 | 2.0 | 0.0 | 0.0 | 1.4 | 1.1 | 14.3 | 0.0 | 47.5 |
| 2100-2200 | Pro | 1.5 | 47.2 | 18.7 | 0.2 | 0.0 | 6.2 | 15.8 | 2.9 | 0.0 | 7.5 |
| | Ocp | 1.0 | 1.6 | 1.9 | 1.0 | 0.0 | 1.3 | 1.0 | 26.8 | 0.0 | 42.7 |
| 2200-2300 | Pro | 0.9 | 50.7 | 20.9 | 0.0 | 0.0 | 5.8 | 12.2 | 1.9 | 0.0 | 7.7 |
| | Ocp | 1.2 | 1.6 | 2.0 | 0.0 | 0.0 | 1.2 | 1.1 | 29.7 | 0.0 | 46.7 |
| 16 hours | Pro | 1.0 | 44.3 | 7.8 | 0.1 | 0.0 | 15.1 | 23.4 | 1.8 | 0.0 | 6.6 |
| | Ocp | 1.1 | 1.6 | 2.1 | 3.3 | 0.0 | 1.5 | 1.2 | 30.6 | 0.0 | 50.7 |

Legend

Pro. Proportion of vehicles in % (Sum may not add up to 100% due to figure rounding)*

Ocp. Average occupancy of vehicles including both driver and passengers*

M&H Medium and Heavy

* All traffic data are collected from combined bounds except for one way traffic